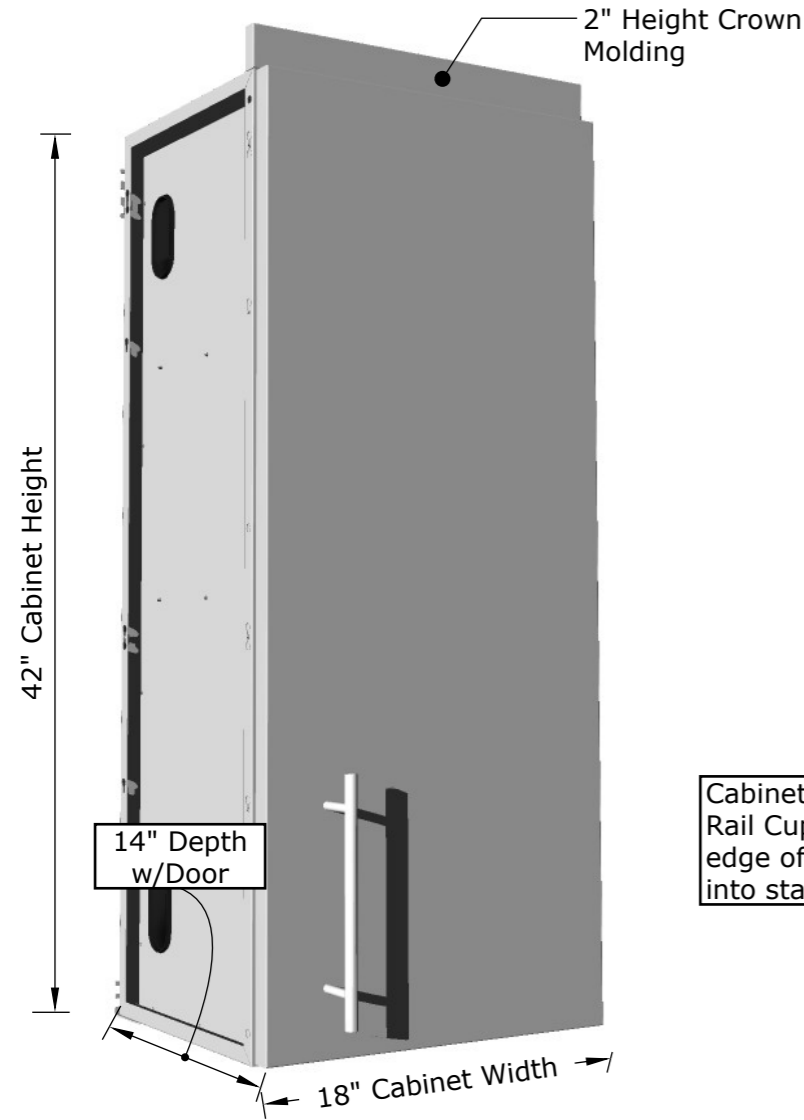
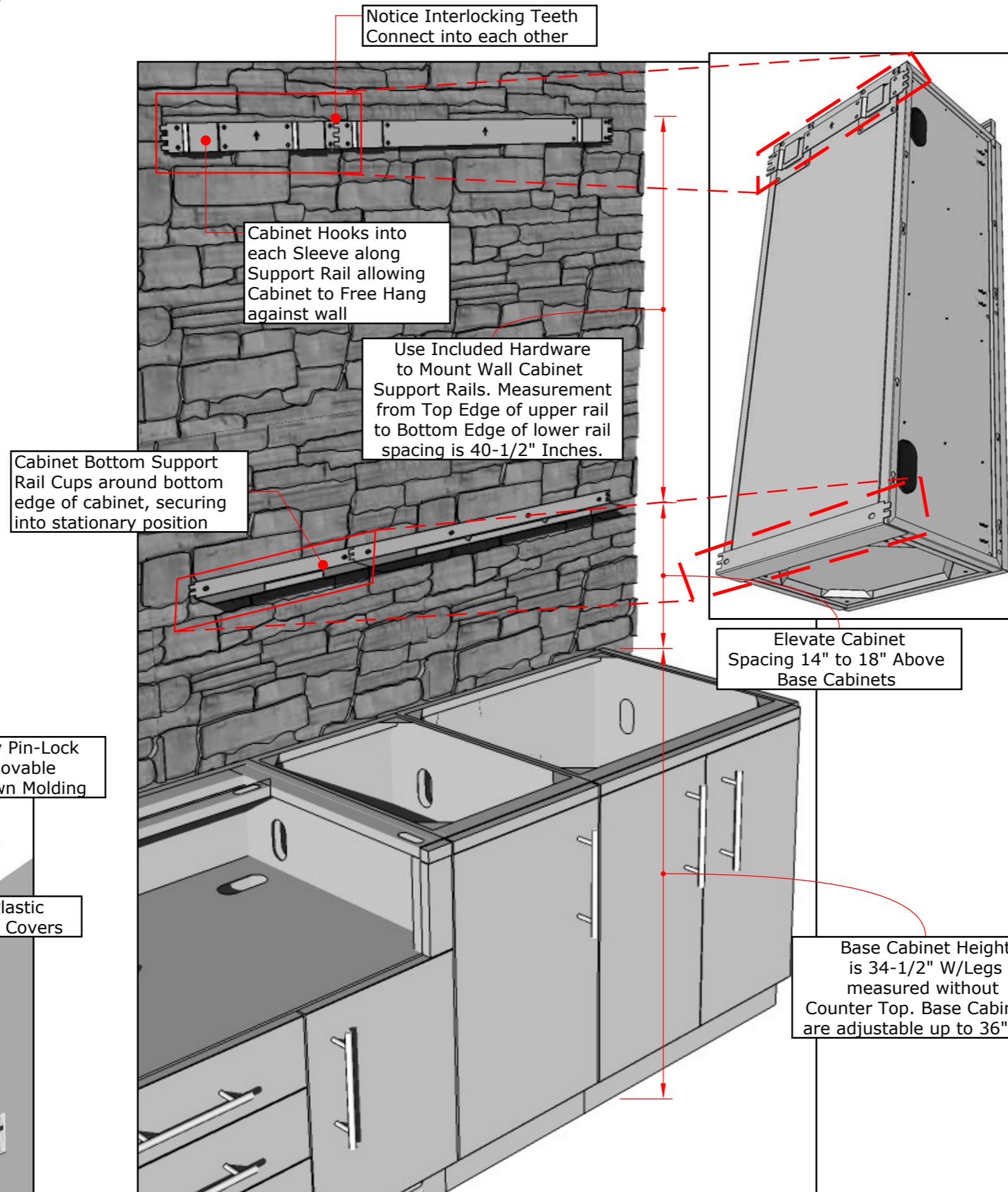


Product Dimensions

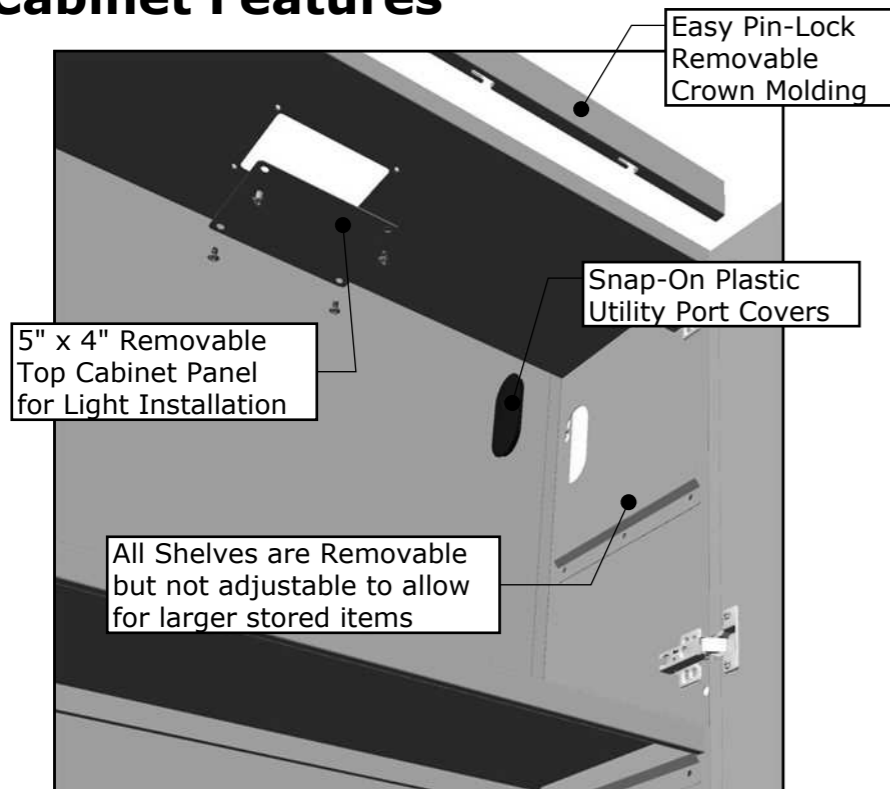


Wall Cabinet Installation -

See full Cabinet Island Instruction for complete details



Cabinet Features



SUNSTONE METAL PRODUCTS
 16004 CENTRAL COMMERCE DR.
 PFLUGERVILLE, TEXAS 78660
 Tel: 888.934.9449
 Bus: 512.487.5116
 Fax: 512.487.7016

PRODUCT

18" Full Height Right-Swing Single Door Wall Cabinet w/Four Shelves

Item No. SWC18FSDR

DESCRIPTION

18" Full Height Wall Cabinet with Right-Swing Single Door and Four Interior Shelves.

- Lifetime Structure Warranty
- 304 Stainless Steel Structure
- 304 SS Rod Handles
- 2" Crown Molding
- Pin-Lock & Screwed Installation
- Cabinet Style Door Hinges
- Covered Access Ports
- Four Interior Shelves

PRODUCT DIMENSIONS

18"W x 14"D (w/Panel) x 42"H
 or 44"H (w/Crown)

MATERIAL SPECS

304 Stainless Steel entire structure, 18 Gauge for Door Panel, 18 Gauge for Cabinet Box, 18 Gauge for Shelf, Handles are made of Solid 304 Stainless Steel Bar.