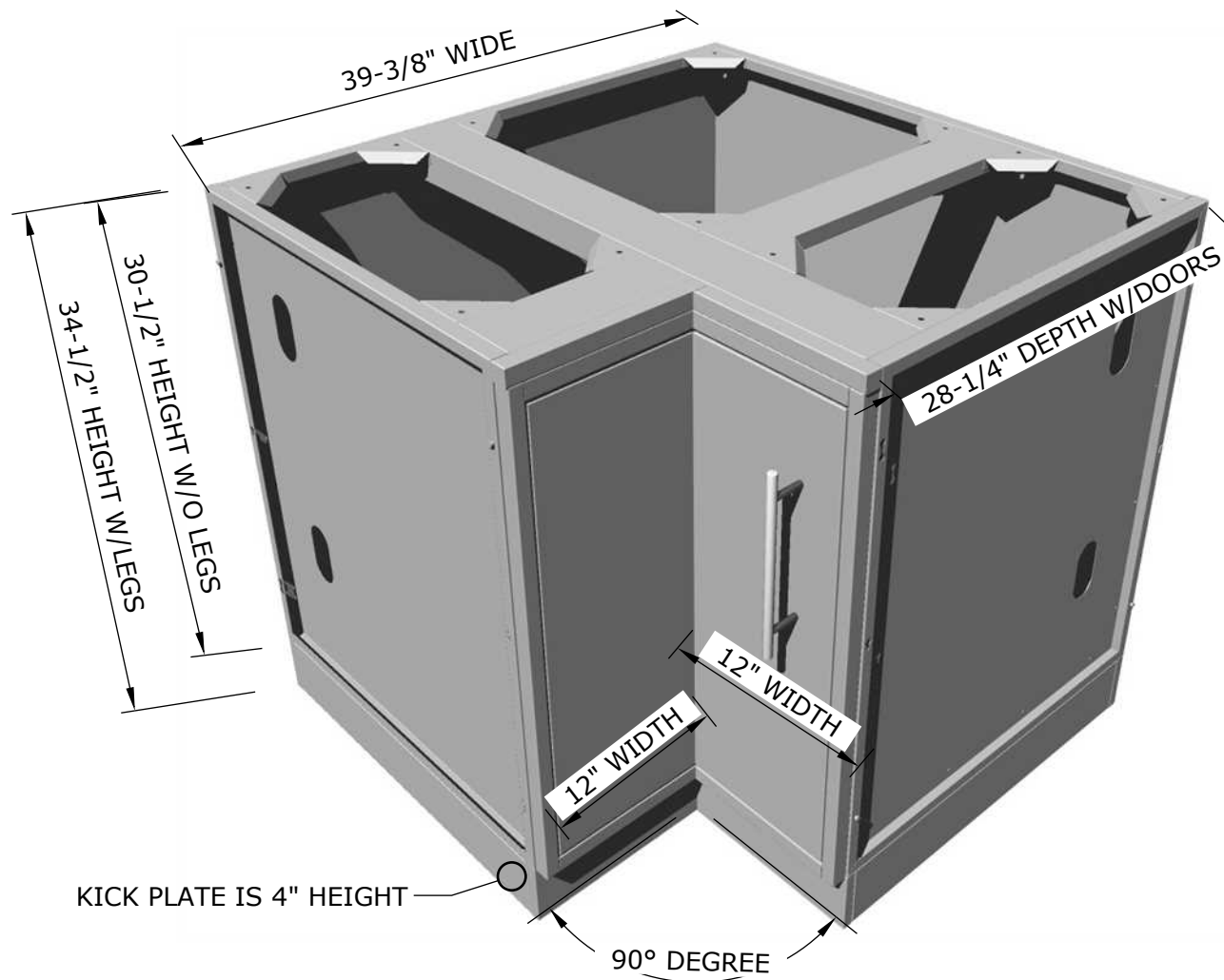
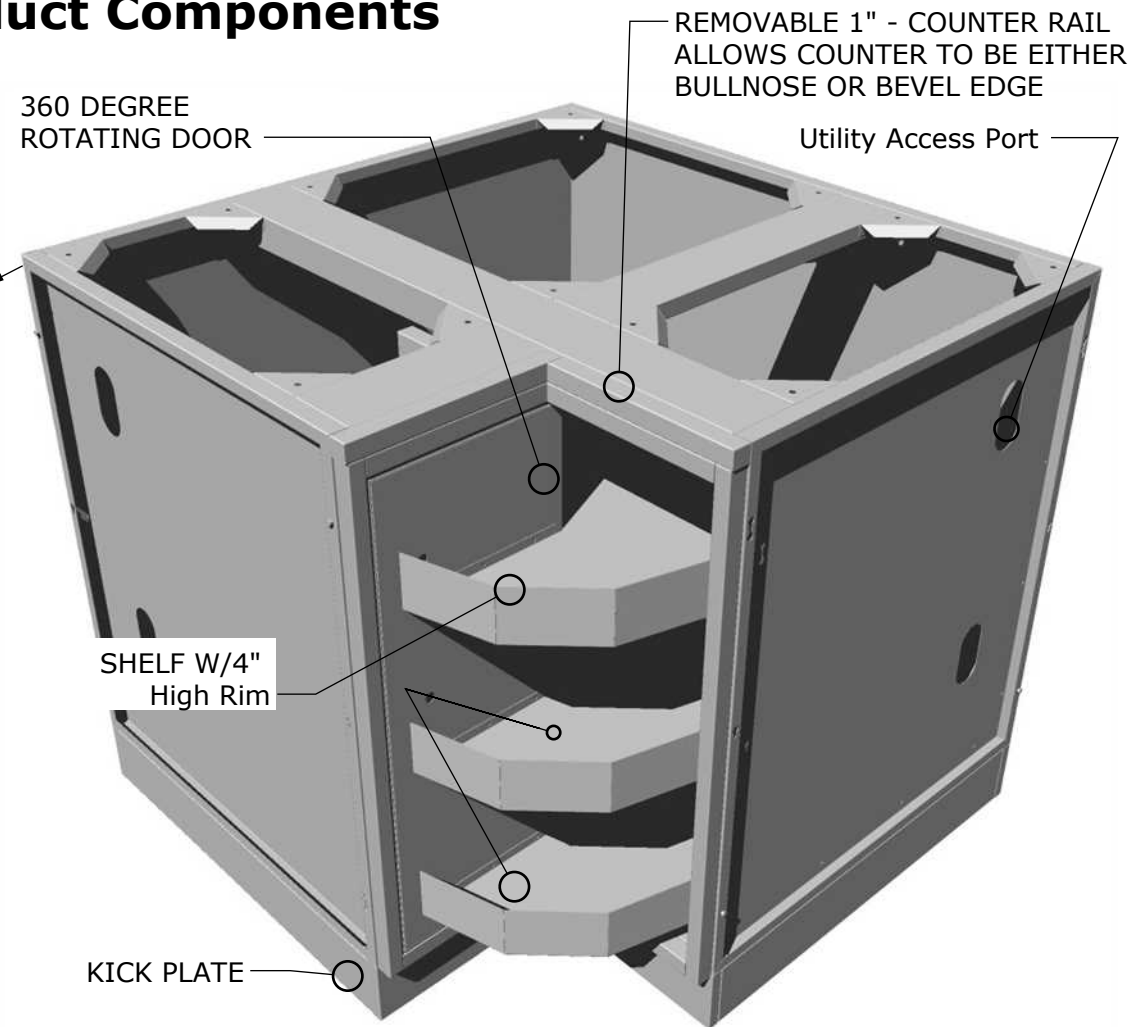


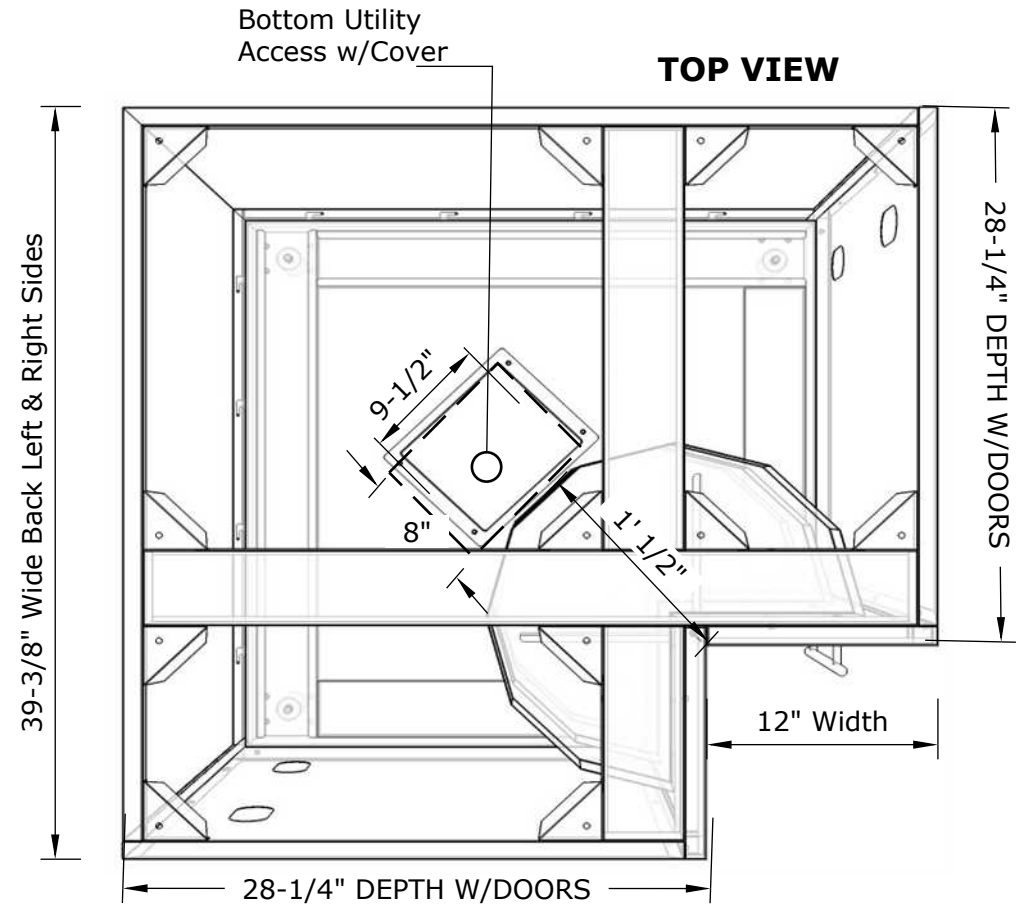
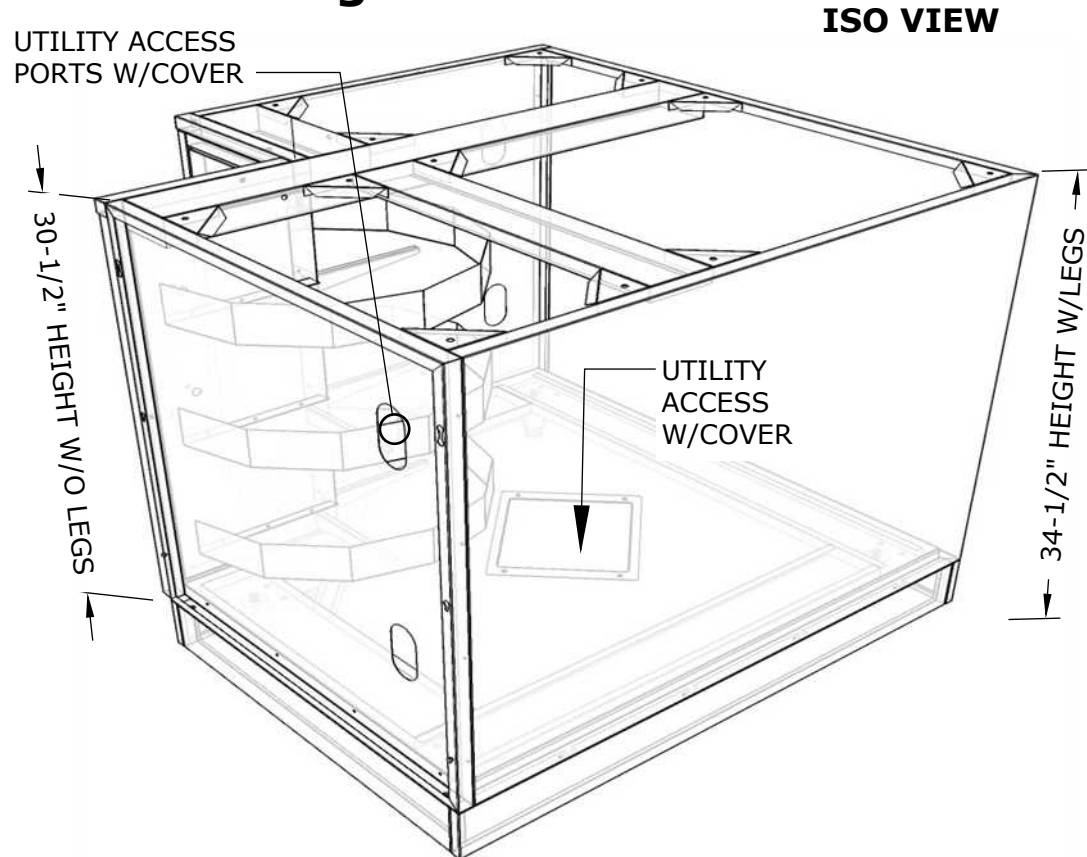
Product Dimensions



Product Components



Product Diagrams



SUNSTONE METAL PRODUCTS
16004 CENTRAL COMMERCE DR.
PFLUGERVILLE, TEXAS 78660
Tel: 888.934.9449
Bus: 512.487.5116
Fax: 512.487.7016

PRODUCT

12"X12" Corner Cabinet
w/Swivel Door & 3 Shelves

Item No. SBC12SLS

DESCRIPTION

12" X 12" Corner Cabinet with
Swivel Shelves.

- Lifetime Structure Warranty
- 304 Stainless Steel Structure
- 304 SS Rod Handles
- Front & Back Kick-Plates
- Easy Pin-Lock Installation
- Soft-Close Drawer Tracks
- Covered Access Ports
- Adjustable Peg-Legs
- Optional Wheel Casters

INCLUDED COMPONENTS

- Front Kick Plates
- Back Solid Kick Plate
- (6) Adjustable Peg Legs
- 360 Lazy Susan 3 Shelf

PRODUCT DIMENSIONS

39"W x 28-1/4"D (w/Panel) x 34-1/2"H (w/Legs) or 30-1/2"H (no Legs) or Upto 36" Max Adjustable Height

INSERT DIMENSIONS

18" Width x 33-1/4" Height x 18" Depth

INSERTABLE PRODUCTS

Single Side Burner - 1SSB
Standard Sink - A-SS17
Commercial Sink - B-PS21

MATERIAL SPECS

304 Stainless Steel entire structure, 18 Gauge for Door Panel, 18 Gauge for Cabinet Box, 18 Gauge for Shelf, Handles are made of Solid 304 Stainless Steel Bar.